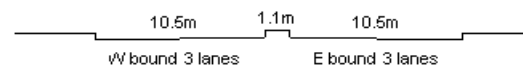
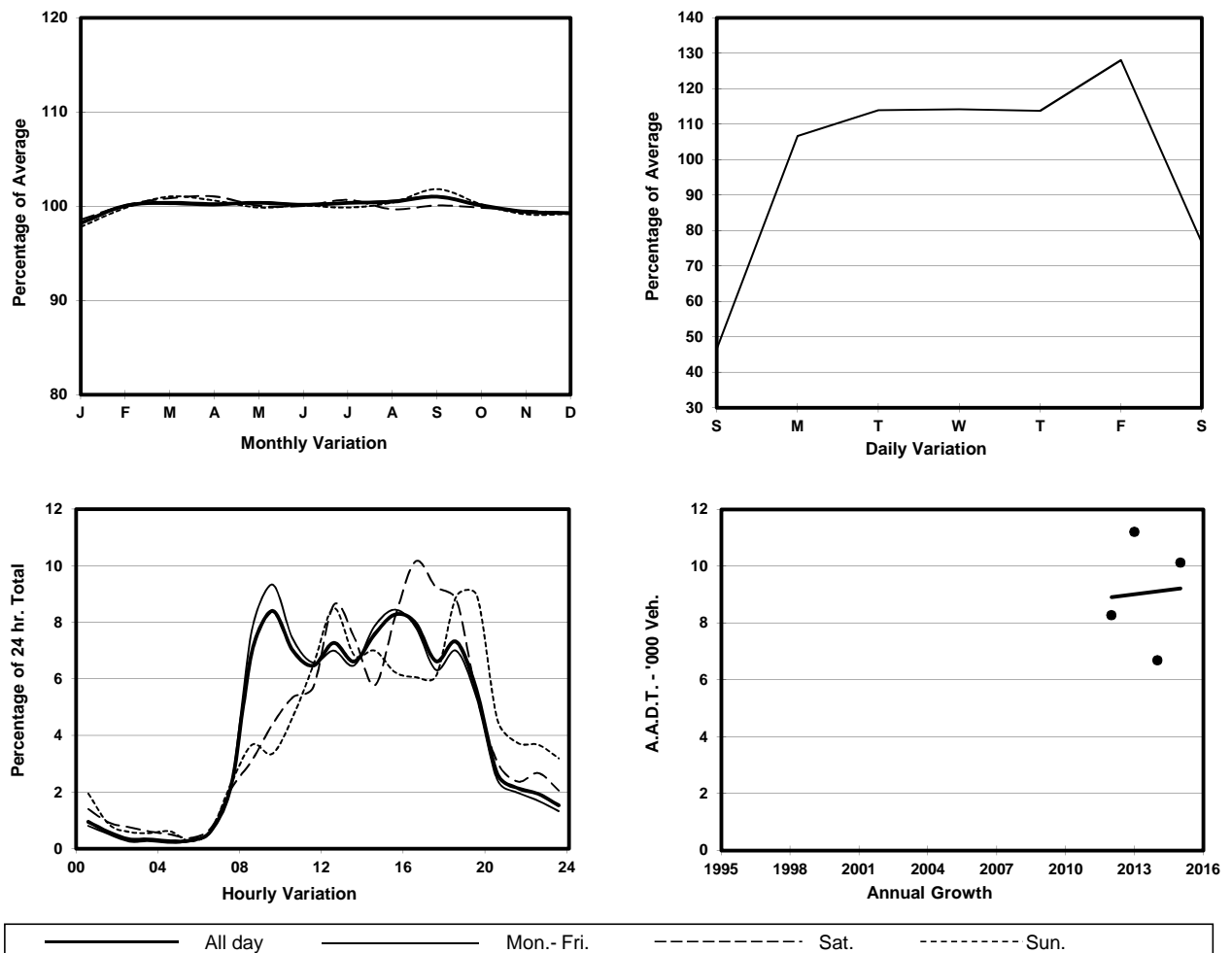


YEAR 2015
 COVERAGE (B) STATION 2408
 ROAD NETWORK MINOR
 ROAD TYPE DISTRICT DISTRIBUTOR

LINK LUNG WUI RD (from TIM MEI AVE to LUNG KING ST)



1. TRAFFIC FLOW VARIATION AND GROWTH



2. TRAFFIC CHARACTERISTICS (BY DIRECTION)

Parameter	All - Day	Mon. - Fri.	Sat.	Sun.
EAST BOUND				
A.A.D.T.	7040	8290	5620	3640
R 12 / 24 - %	82.3	84	78.1	70.3
R 16 / 24 - %	95.3	96	92.8	91.3
AM Peak Hour	0900-1000	0900-1000	0900-1000	0800-0900
One-way flow at AM peak hour	590	780	250	130
T - % (AM)	-	13.8	-	-
PM Peak Hour	1600-1700	1600-1700	1700-1800	1800-1900
One-way flow at PM peak hour	570	680	530	340
T - % (PM)	-	16.5	-	-
Prop.of commercial vehicles - 16 hr.	-	11.1	-	-
WEST BOUND				
A.A.D.T.	3080	3720	2350	1210
R 12 / 24 - %	83.8	85	81.2	70.3
R 16 / 24 - %	94.5	95.1	92	91
AM Peak Hour	0900-1000	0900-1000	0900-1000	0800-0900
One-way flow at AM peak hour	260	340	100	50
T - % (AM)	-	9.6	-	-
PM Peak Hour	1600-1700	1600-1700	1600-1700	1800-1900
One-way flow at PM peak hour	240	260	290	90
T - % (PM)	-	11.1	-	-
Prop.of commercial vehicles - 16 hr.	-	10.7	-	-

3. OTHER INFORMATION AND COMMENT

4. Vehicle classification and occupancy - Monday to Friday

Time		Class of vehicle									
		Motor	Private	Taxi	Private	PLB	Goods veh.		Non	Fr. Bus	
		Cycle	Car		LB		Light	M & H	Fr. Bus	SD	DD
0700-0800	Pro	0.0	17.0	51.1	0.0	0.0	5.7	8.5	8.5	0.0	9.2
	Ocp	0.0	1.2	1.8	0.0	0.0	1.0	1.7	2.7	0.0	7.8
0800-0900	Pro	3.2	35.4	42.4	0.5	2.7	5.9	1.1	5.9	0.0	3.0
	Ocp	1.2	1.2	1.5	2.0	1.0	1.1	1.5	9.8	0.0	11.2
0900-1000 Peak hour	Pro	0.8	42.8	29.8	0.4	0.4	13.0	2.9	7.1	0.0	2.7
	Ocp	1.0	1.3	1.9	5.0	17.0	1.5	1.1	9.3	0.0	5.3
1000-1100	Pro	1.2	37.4	28.7	0.6	1.2	19.9	3.1	5.0	0.0	2.8
	Ocp	1.0	1.5	1.7	1.0	8.5	1.6	1.8	6.1	0.0	6.0
1100-1200	Pro	2.1	32.1	43.2	1.4	0.0	12.5	4.9	2.1	0.0	1.7
	Ocp	1.0	1.4	1.8	4.5	0.0	1.6	1.0	3.3	0.0	4.2
1200-1300	Pro	1.5	44.2	29.5	0.0	0.0	14.0	4.4	4.4	0.2	1.8
	Ocp	1.0	1.4	1.8	0.0	0.0	1.8	1.0	2.5	1.0	6.0
1300-1400	Pro	0.7	50.6	30.8	1.5	0.0	7.3	2.9	4.4	0.0	1.8
	Ocp	1.0	1.4	1.6	3.0	0.0	1.7	1.5	1.5	0.0	6.0
1400-1500	Pro	2.1	38.5	34.2	0.0	0.0	16.0	5.3	2.1	0.0	1.6
	Ocp	1.0	1.5	1.7	0.0	0.0	1.6	1.2	2.3	0.0	5.1
1500-1600	Pro	0.0	41.6	26.9	0.0	0.0	21.1	4.7	4.1	0.0	1.6
	Ocp	0.0	1.5	1.8	0.0	0.0	1.5	1.0	4.3	0.0	6.0
1600-1700	Pro	1.3	47.2	17.6	1.3	0.0	17.6	5.0	7.6	0.0	2.4
	Ocp	1.0	1.3	1.6	6.5	0.0	1.4	1.1	5.4	0.0	4.1
1700-1800	Pro	1.1	46.7	31.3	0.6	0.0	6.8	1.1	9.7	0.0	2.7
	Ocp	1.0	1.7	2.1	1.0	0.0	1.3	1.0	6.1	0.0	2.8
1800-1900	Pro	0.0	55.6	26.1	0.0	1.4	4.8	1.4	8.2	0.0	2.6
	Ocp	0.0	1.3	2.4	0.0	16.0	2.1	1.0	15.9	0.0	3.9
1900-2000	Pro	1.4	54.6	31.4	0.7	0.0	2.0	0.0	7.5	0.0	2.4
	Ocp	1.0	1.7	2.0	2.0	0.0	2.0	0.0	9.5	0.0	3.4
2000-2100	Pro	1.5	39.7	42.6	2.9	0.0	1.5	0.0	7.4	0.0	4.4
	Ocp	1.0	1.4	1.5	1.0	0.0	1.0	0.0	27.2	0.0	3.4
2100-2200	Pro	0.0	59.6	35.7	0.0	0.0	0.0	0.0	0.0	0.0	4.7
	Ocp	0.0	1.3	1.4	0.0	0.0	0.0	0.0	0.0	0.0	1.7
2200-2300	Pro	0.0	37.7	56.5	0.0	0.0	2.1	0.0	0.0	0.0	3.7
	Ocp	0.0	1.5	2.1	0.0	0.0	1.0	0.0	0.0	0.0	5.1
16 hours	Pro	1.2	43.3	32.4	0.6	0.5	11.0	2.9	5.6	0.1	2.6
	Ocp	1.0	1.4	1.8	3.2	7.1	1.5	1.2	8.2	1.0	5.3

Legend

Pro. Proportion of vehicles in % (Sum may not add up to 100% due to figure rounding)*

Ocp. Average occupancy of vehicles including both driver and passengers*

M&H Medium and Heavy

* All traffic data are collected from combined bounds except for one way traffic